



MONTHLY MEMBERSHIP PROGRESS REPORT

District 323 G1

Results as of: 6/30/2015

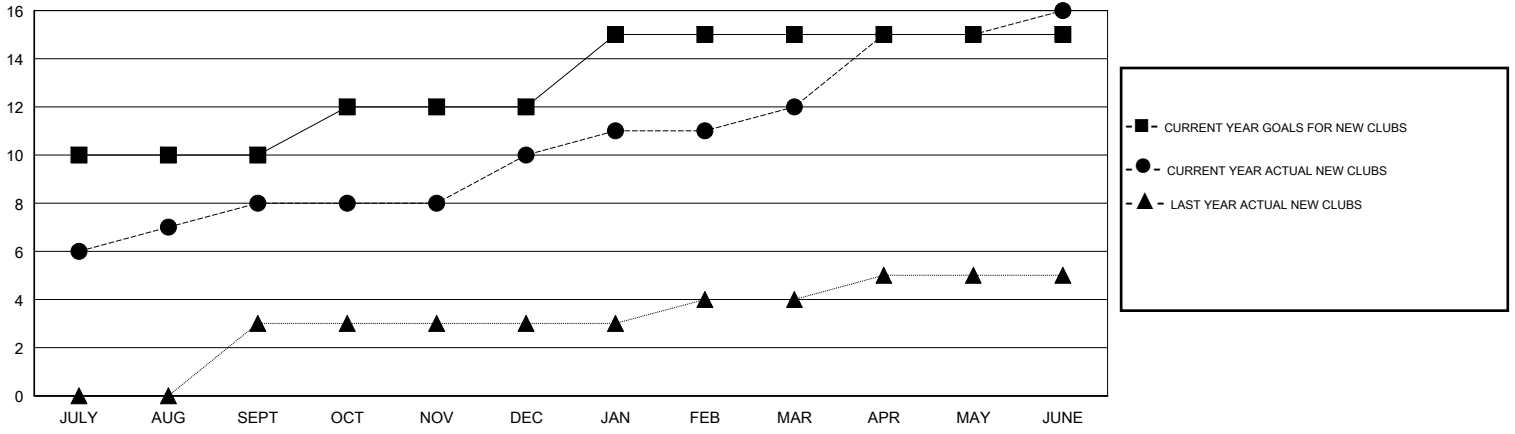
GMT: KAMLESH JAIN

LOCATION INDIA

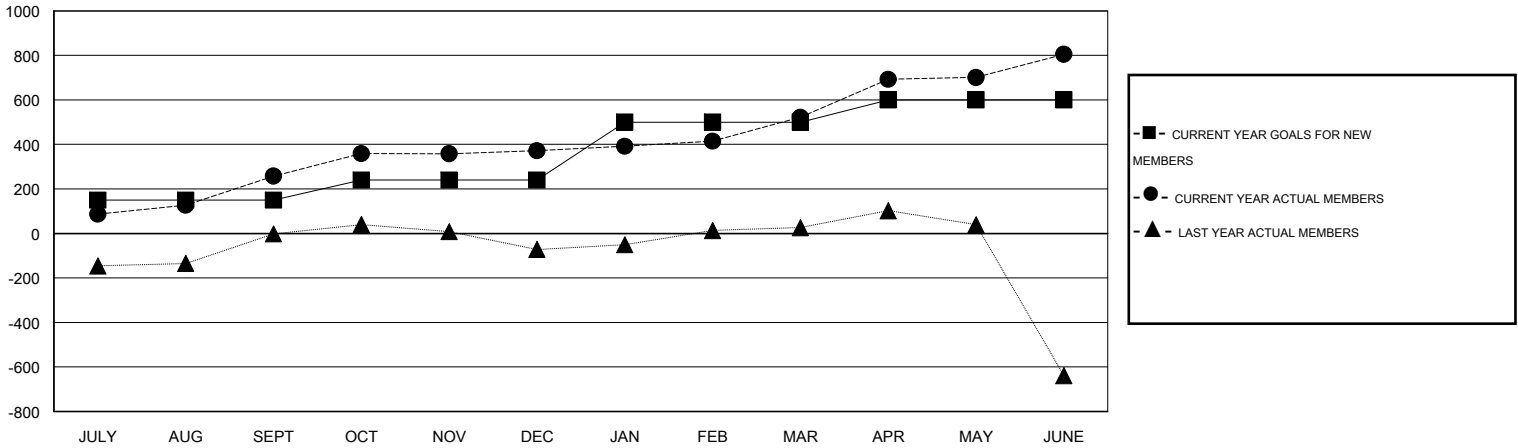
GMT CA 6

Clubs					Members				
RESULTS FOR 2014-2015					RESULTS FOR 2014-2015				
QUARTER	NEW CLUB GOAL	NEW CLUBS	DROPPED CLUBS	NET GAIN/LOSS	QUARTER	NEW MEMBER GOAL	CHARTER AND NEW MEMBERS ADDED	DROPPED MEMBERS	NET GAIN/LOSS
JULY/AUG/SEPT	10	8	0	8	JULY/AUG/SEPT	150	343	85	258
OCT/NOV/DEC	2	2	0	2	OCT/NOV/DEC	90	177	63	114
JAN/FEB/MAR	3	2	0	2	JAN/FEB/MAR	260	177	27	150
APR/MAY/JUNE	0	4	0	4	APR/MAY/JUNE	100	436	153	283

GOALS AND ACTUAL NEW CLUBS CUMULATIVE



GOALS AND ACTUAL MEMBERS CUMULATIVE



DROPPED CLUBS: 0	125 CLUBS OF 126 ADDED 1 OR MORE NEW MEMBERS	GENDER DISTRIBUTION
		MALE 3,193 (73.18%)
		FEMALE 1,170 (26.82%)
DROPPED MEMBERS	CLICK HERE FOR HEALTH ASSESSMENT DATA	FAMILY UNIT MEMBERS 1,375
DECEASED 7		HEAD OF HOUSEHOLD 607
CLUB CANCELLED 0		NON-HEAD OF HOUSEHOLD 768
OTHER 321		
TOTAL 328		